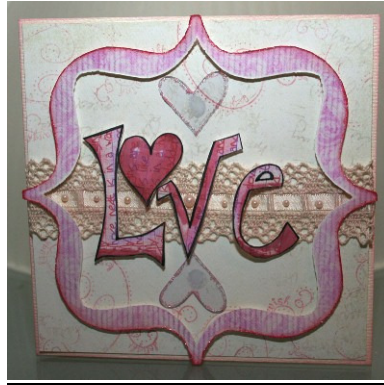


Cutting a Digital Image using the Craft Robo



One of the main reasons I bought my Robo was to cut out digital images as my cutting skill with scissors and craft knives is not so good. I've put together a quick guide on how I do this... I understand that others may have different methods but this one works for me 😊

What do you need?

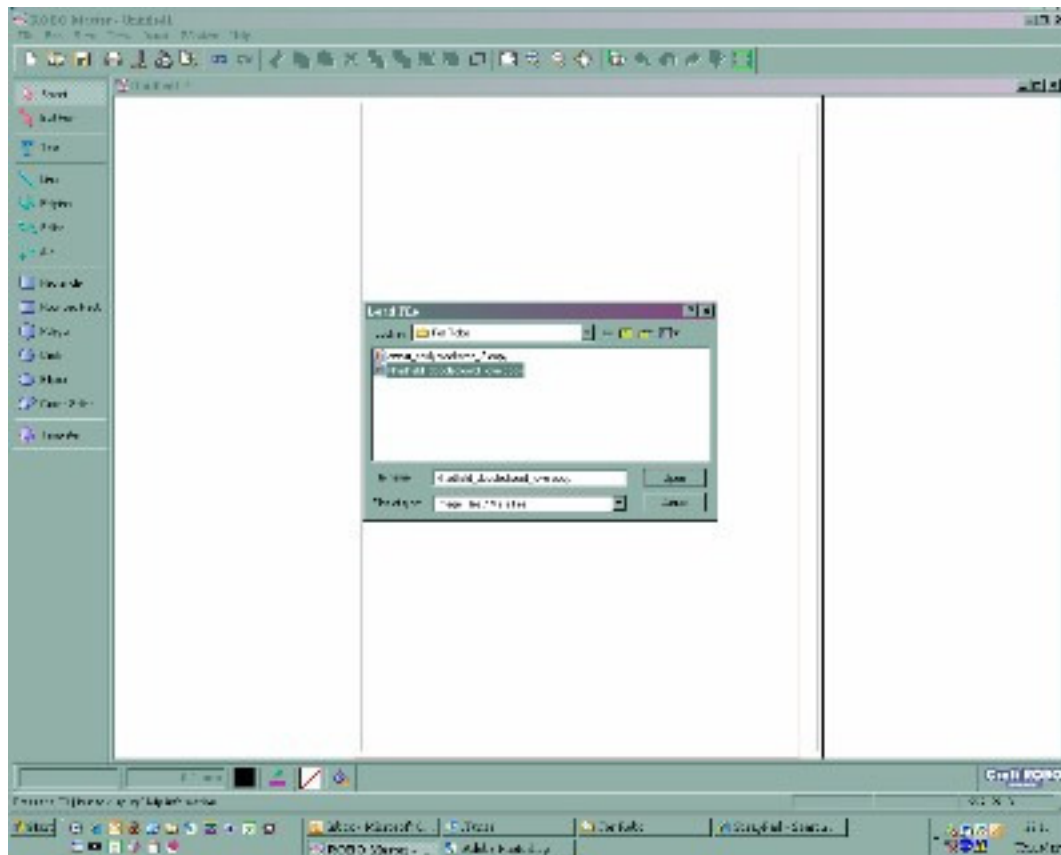
Digital elements that can be easily cut – think along the lines that if you can cut it with scissors, the Robo will be able to cut it quite well. These images need to have quite well-defined outlines if you want a clean cut. The elements need to be JPG extensions (this means the .jpg on the end of the file name ie. The file type) if you have any other type of extension, you may need to make a copy of it, open it and save it as a .jpeg)

A second edition Craft Robo (model number CC200-20) and Robo Master version 2.40. If you're not sure what version of the software you have, when you have opened the software ready to use, click on **Help** and then **About** and this will tell you the version of the software you are running. If it's lower than v 2.40 go to a reputable website to download version 2.40

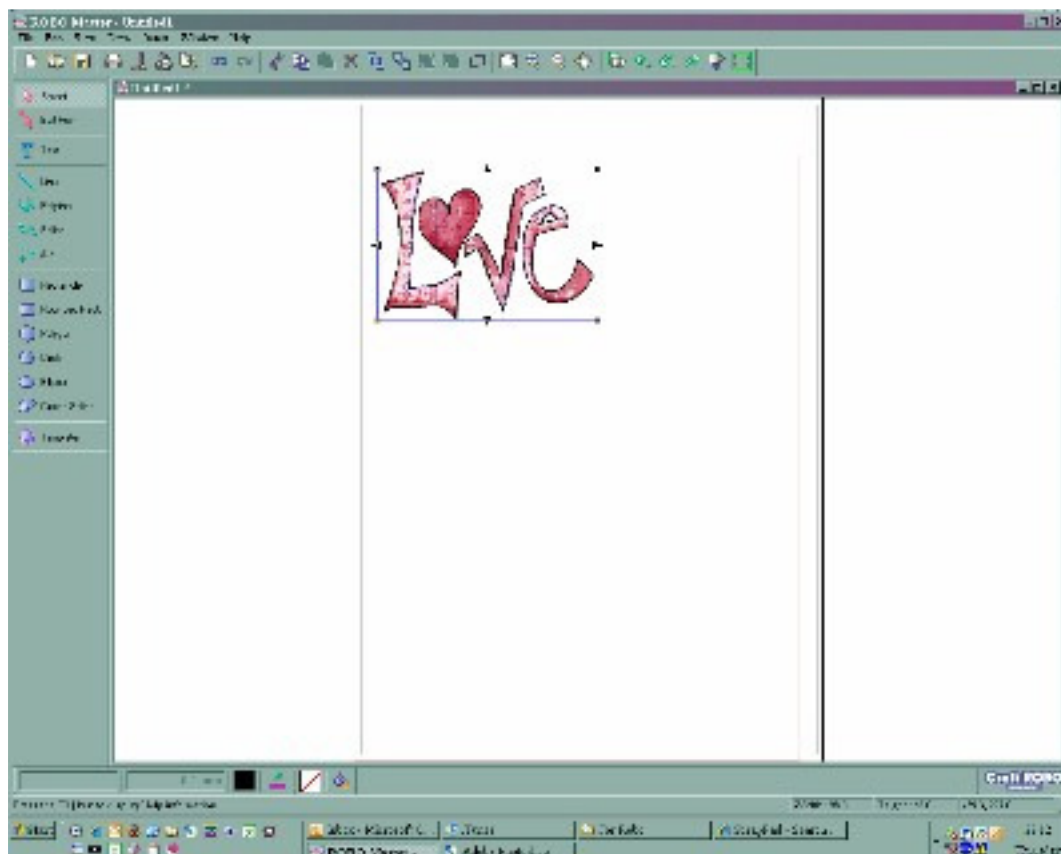
All the bits you'd expect to need such as the carrier sheet and some card/paper (as heavy duty as you need) to print and cut.

Right, let's get started....

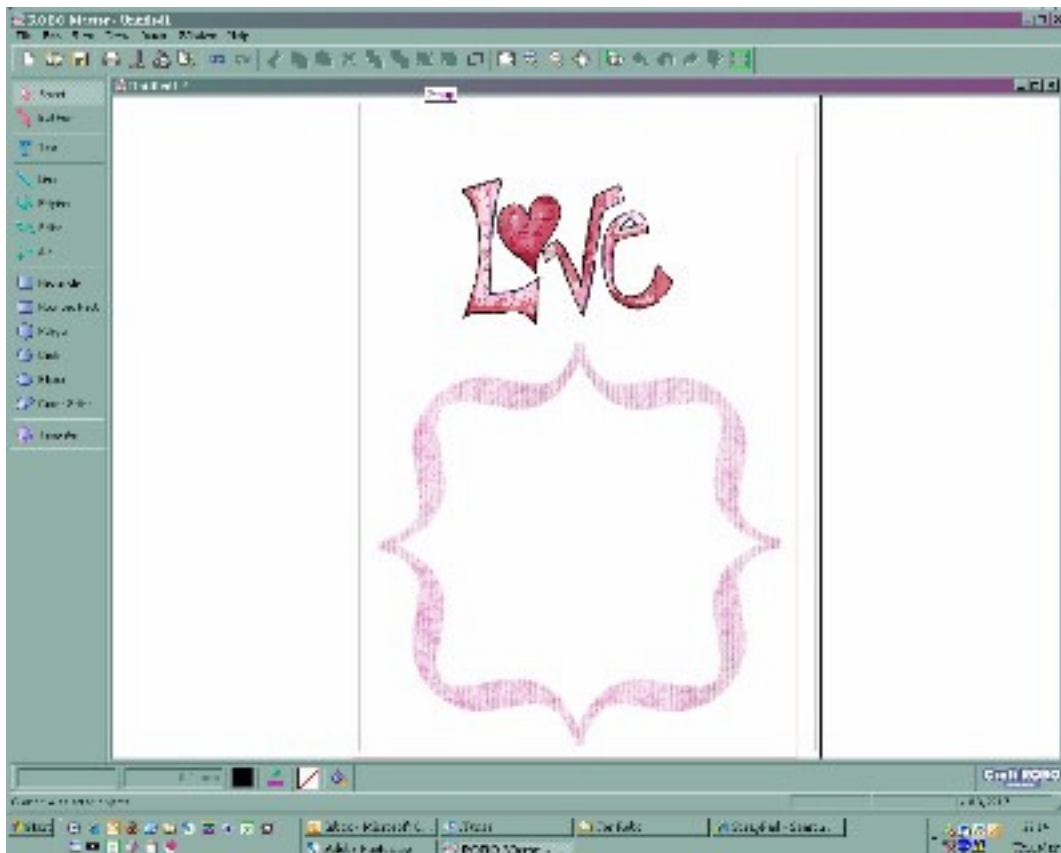
1. Open Robo Master and then open a new GSD file. Select **File** Then **New** and then select the size of paper you'll be using. Make it easy on yourself the first time around and print to A4.
2. From the top menu, select **Insert** and then **File** from the dropdown



3. Select the .JPG file you'd like to cut and a rectangle will appear on your screen, wherever you click will be where this image sits on your paper.
4. You can resize the image at this point by dragging it in or out.



5. If you cannot see the image when trying to insert it, it could be that it's not in a format that the Robo likes. The best way to remedy this is to open the image in your chosen graphics editor software and select **File** then **Save As** and chose to save it as a copy and in the **format** drop-down field, select **JPEG**
6. Back to Robo Master ☺ We need to make this image so that when it's printed and fed into the Robo, the Robo will be able to 'see' the image. To do this select **Edit** then **Registration Mark Settings** then tick the box for registration marks and click on **Ok**
7. Next we need to give the image and outline for the Robo to cut. To do this, click on the image so that the blue box around it is visible, then click on the green box that sits in the top tool bar. If you haven't got this green box, you're not running version 2.40 or above.
8. Next, click on **Convert to Outline** and this will give you an idea of where the Robo will cut. To get this just right (this will depend on whether you just want the outline of the image or the detail in too) use the **Threshold** slider and **Edit Image** button (which alternates as the **Convert to Outline** button) until you have it just right
9. I keep the **Thickness** slider at it's minimum as this dictates the amount of border or outline your image will have when it's cut and I like it to have none most of the time
10. When you're ready, click on **Paste then Exit** and the cutting border will be transposed onto your image



11. Next, set up your output settings for printing by clicking on **File** then **Output Settings**. Make your required changes to you printer and print options here before clicking on **Ok**

12. Now we're ready for printing – yay! Click on **File** then **Print** and make sure your printer is switched on ;)
13. Once your image has printed you can adhere it to your paper onto the carrier sheet and you're ready to cut.
14. You then follow your usual cutting process making sure that registration marks are selected when you open the **Cut** window
15. It may well feed your paper through the Robo a few times more than when you're cutting a non-printed image. This is just to ensure that it can see the registration marks.
16. If you have selected an image that doesn't have well-defined lines, you may have a slightly jagged edge to your cut image.
17. Now all you have to do is ink, glitter and stick!



Once I'd printed and cut my images, I started putting together my card and having some fun. The images I've used come from The Lilypad and I just added some lovely Crate Paper, ribbon from John Lewis haberdashers (got to love that place) and some Kaiser Pearls. I also had some acetate hearts that I'd forgotten about too. These were stickled before they could get away